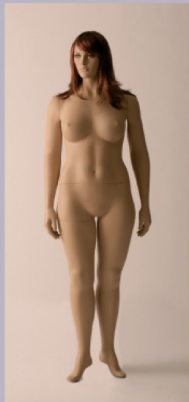




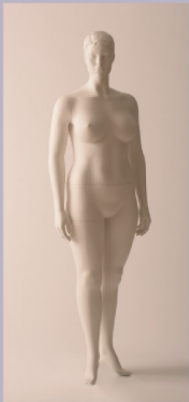
Plus



PLN01



PLN02



PLB01

# Plus

A magnificently voluptuous collection of mannequins to present larger size fashion, glamour-wear and tailoring to perfection.

Ample, yet shapely, this perfectly proportioned larger lady will flatter merchandise with either of the two simply elegant positions.

This collection is available with natural make up and wig or with a sculpted hair.

Measurements	Metric	Imperial
Height	180 cm	71"
Bust	108 cm	42"
Waist	85 cm	33"
Hips	112 cm	44"
Inside leg	76 cm	30"
Shoe size	38	5



NATURAL HEAD



SCULPTED HAIR

HANS BOODT  
MANNEQUINS

for **proportion>london**

9 Dellington Street, London EC1V 0LN, United Kingdom t + 44 (0)20 7251 8843  
f + 44 (0)20 7250 1798 e sales@proportionlondon.com www.proportionlondon.com